

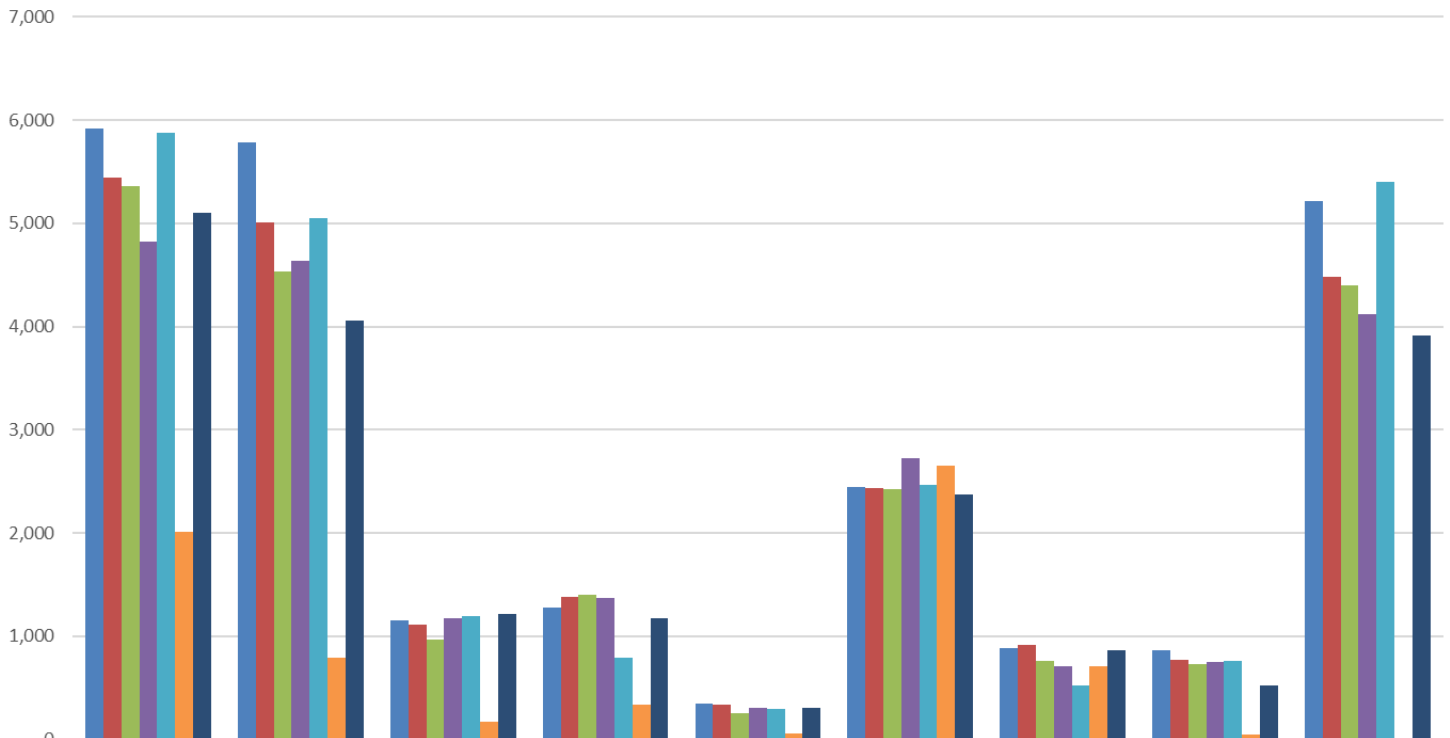
**April 2021**

Karen Connell

# Columbus Public Library Director's Report

## Access Services, Circulation, & Discovery

Fiscal Year 2020-2021 Library Usage by Month



	Total Checkouts	CPL Checkouts	Self - Check Checkouts	Renewals	Reserves/Holds	Digital Library: Material	Digital Library: Collection	Public Computer Uses	Door Count
■ Oct.	5,923	5,784	1,158	1,282	353	2,443	888	870	5,215
■ Nov.	5,446	5,007	1,109	1,384	337	2,433	915	767	4,484
■ Dec.	5,360	4,533	967	1,402	253	2,421	757	726	4,395
■ Jan.	4,820	4,641	1,170	1,368	304	2,727	705	754	4,122
■ Feb.	5,874	5,055	1,199	789	297	2,469	519	757	5,401
■ March	2,014	791	173	343	56	2,650	706	49	0
■ April	5,106	4,058	1,214	1,175	305	2,376	862	529	3,914

Closed February 27-March 28 while moving to temporary building, offered curbside checkout March 1-6

### Services and Programs

#### Services

- Curbside Service Uses (3)
- ILL items received (65)
- Meeting Room Uses (15)
- Makerspace
  - Open Hours: 2 hours daily M-Th

#### Programs for Adults

- Book Club (6 participants)
- Coloring Club (9 attendants)
- Movie Matinee (6 attendants)
- Author Fair (60 attended at The Friedhof Building)

#### Programs for Teens

- Teen Book Box (2 participants)
- Anime Club, two events (13 attendants)
- Teen Book Talks (7 participants)
- Tween Night (14 attendants)

#### Programs for Children (238 participants)

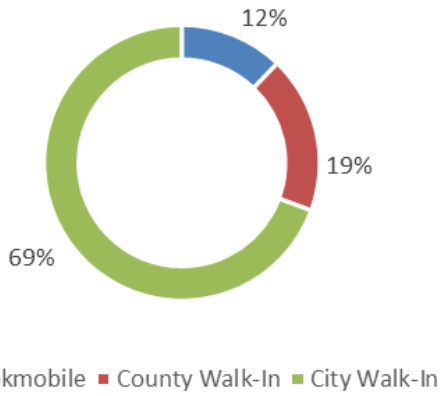
- StoryTime & StoryART (each conducted 4 times)+ 8 early literacy activities
- Frankfort Square StoryTime with Immanuel Lutheran Kindergarten (25 attendees)
- Word Warriors reading program (46 entries)

# Platte County Library Service

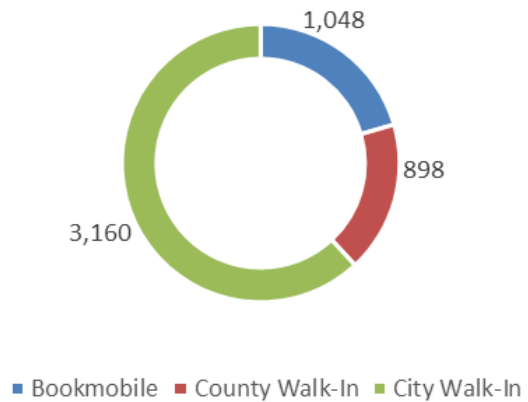
Contract Years July 1, 2020 June 30, 2023

**April 2021**

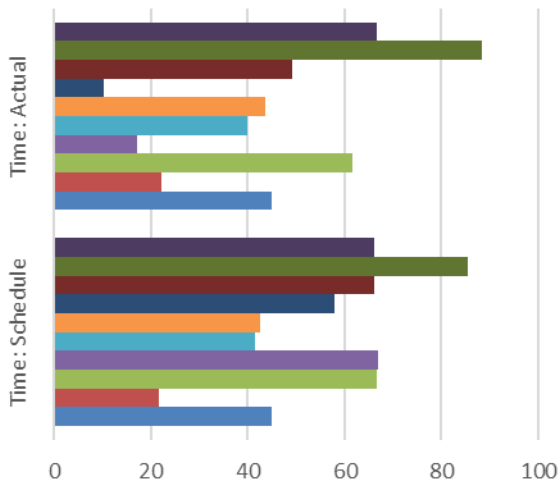
### Checkouts Contract Year 1



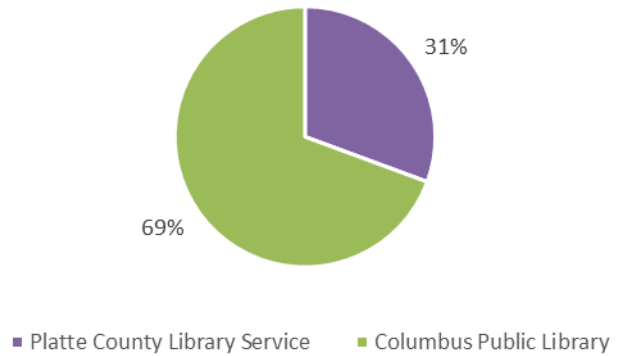
### April 2021 Checkouts



### Bookmobile Hours 1st Year of Contract



### Library Services Usage (Checkouts) 1st Year of Contract



### Bookmobile Stops 1st Year of Contract

Month	Stops: Schedule	Stops: Actual
April	26	26
March	34	34
February	26	18
January	22	4
December	17	17
November	15	13
October	26	6
September	17	13
August	9	9
July	16	16

September: generator trouble, off road 1 day

October: generator diagnostics and repair, off road 8 days

January: generator repair and schools cancelled due to snow, off road 8 days

February: schools closed due to extreme low temperatures