

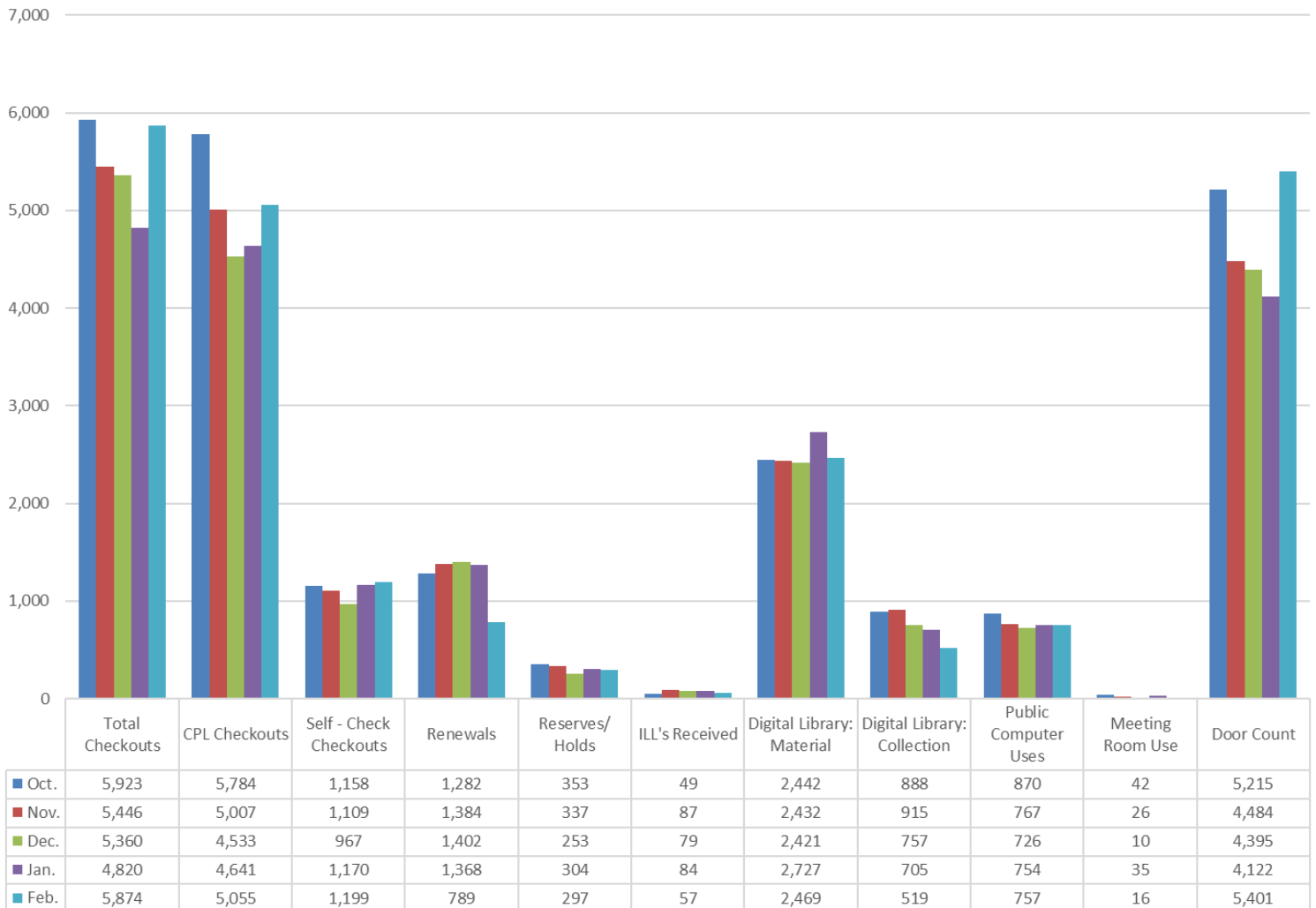
**February
2021**

Karen Connell

Columbus Public Library Director's Report

Access Services, Circulation, & Discovery

Fiscal Year 2020-2021 Library Usage by Month



Programs, Partnerships, Publicity

Services

- Curbside Service (3 Uses in February)
- Door count (avg. 235 people per day, open 23 days)
- Makerspace closed in preparation to move

The library closed at 6pm on Friday, February 26. A public auction was held the following day, selling items not planned to be used in the temporary library or stored for future use. Approximately \$8500 was raised.

Programs

- Book Club (5 participants)
- Word Warriors reading program (53 entries)
- Anime Club (2 days) total of 16 attendants
- An autonomous shopping experience, the Friends of the Library book sale, began November 19 and remained open until the library closed February 26.

Online Programs

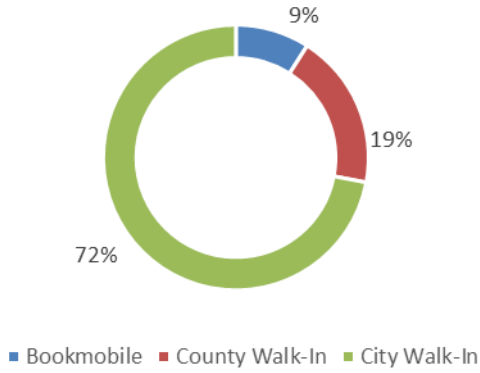
- Teen Book Talks (6 participants)

Platte County Library Service

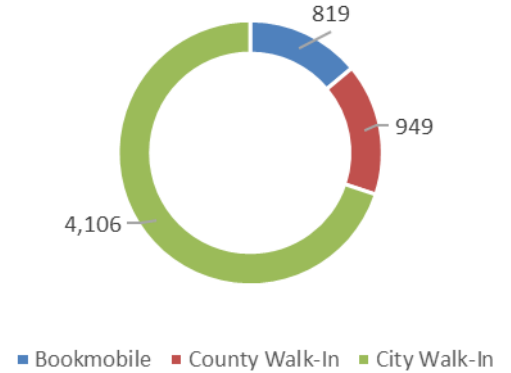
Contract Years July 1, 2020 June 30, 2023

**February
2021**

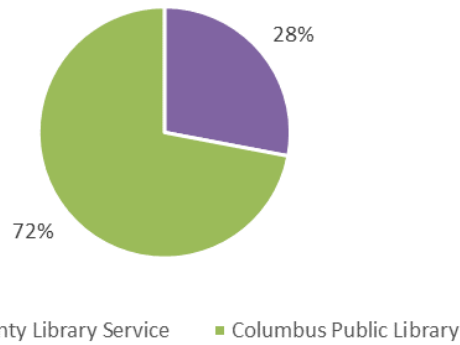
Checkouts Contract Year 1



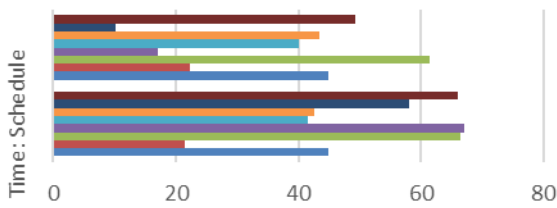
February 2021 Checkouts



Library Services Usage (Checkouts)
1st Year of Contract

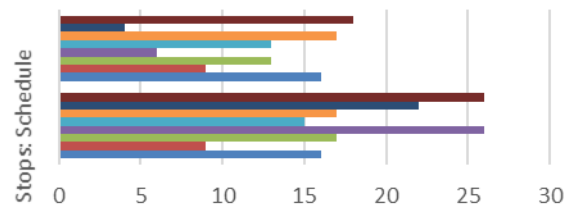


Bookmobile Hours
1st Year of Contract



	Time: Schedule	Time: Actual
February	66	49.25
January	58	10.25
December	42.5	43.5
November	41.5	40
October	67	17
September	66.5	61.5
August	21.5	22.25
July	45	45

Bookmobile Stops
1st Year of Contract



	Stops: Schedule	Stops: Actual
February	26	18
January	22	4
December	17	17
November	15	13
October	26	6
September	17	13
August	9	9
July	16	16

September: generator trouble, off road 1 day

October: generator diagnostics and repair, off road 8 days

January: generator repair and schools cancelled due to snow, off road 8 days

February: schools closed due to extreme low temperatures