

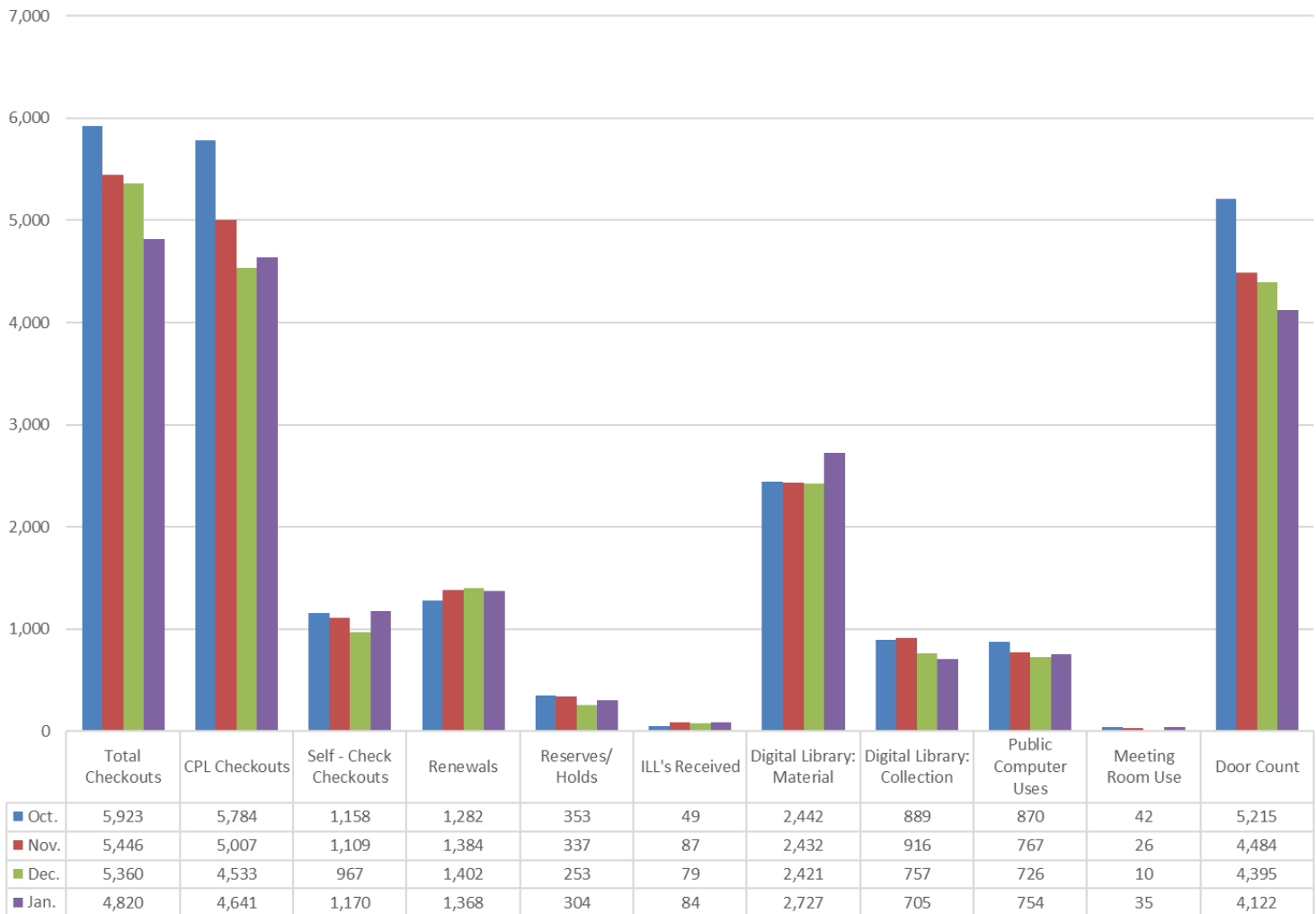
**January
2021**

Karen Connell

Columbus Public Library Director's Report

Access Services, Circulation, & Discovery

Fiscal Year 2020-2021 Library Usage by Month



Programs, Partnerships, Publicity

Services

- Curbside Service (7 Uses in January)
- Door count (avg. 159 people per day, open 26 days)
- Makerspace Open Hours
 - Public Equipment Use:
 - Rayjet 4
 - Cricut 1
 - Printer 2
 - Heat Press 2

Programs

- Book Club (5 participants)
- Anime Club (2 days) total of 5 attendants
- An autonomous shopping experience, the Friends of the Library book sale, began November 19 and will remain open until the library moves to the temporary location.

Online Programs

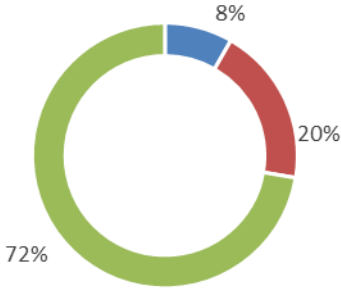
- Teen Book Talks (6 participants)

Platte County Library Service

Contract Years July 1, 2020 June 30, 2023

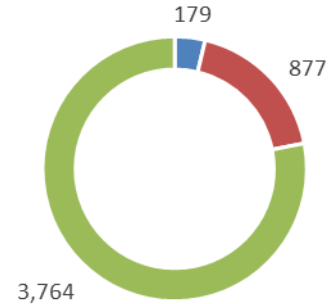
**January
2021**

Checkouts Contract Year 1



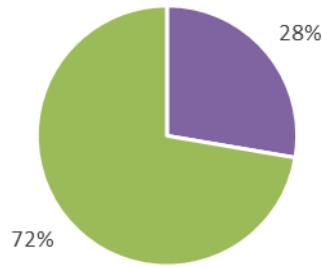
■ Bookmobile ■ County Walk-In ■ City Walk-In

January 2021 Checkouts



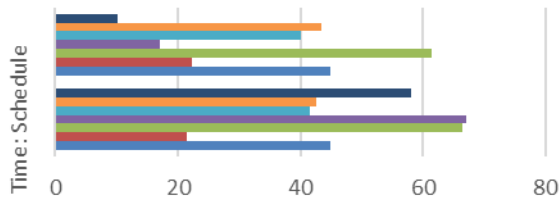
■ Bookmobile ■ County Walk-In ■ City Walk-In

Library Services Usage (Checkouts) 1st Year of Contract



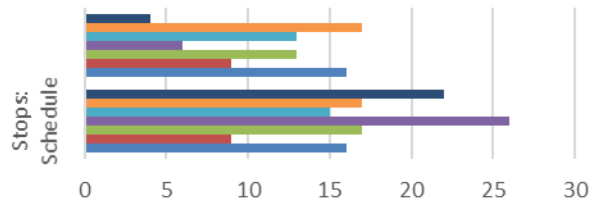
■ Platte County Library Service ■ Columbus Public Library

Bookmobile Hours 1st Year of Contract



	Time: Schedule	Time: Actual
■ January	58	10.25
■ December	42.5	43.5
■ November	41.5	40
■ October	67	17
■ September	66.5	61.5
■ August	21.5	22.25
■ July	45	45

Bookmobile Stops 1st Year of Contract



	Stops: Schedule	Stops: Actual
■ January	22	4
■ December	17	17
■ November	15	13
■ October	26	6
■ September	17	13
■ August	9	9
■ July	16	16

September: generator trouble, off road 1 day

October: generator diagnostics and repair, off road 8 days

January: generator repair and schools cancelled due to snow, off road 8 days