

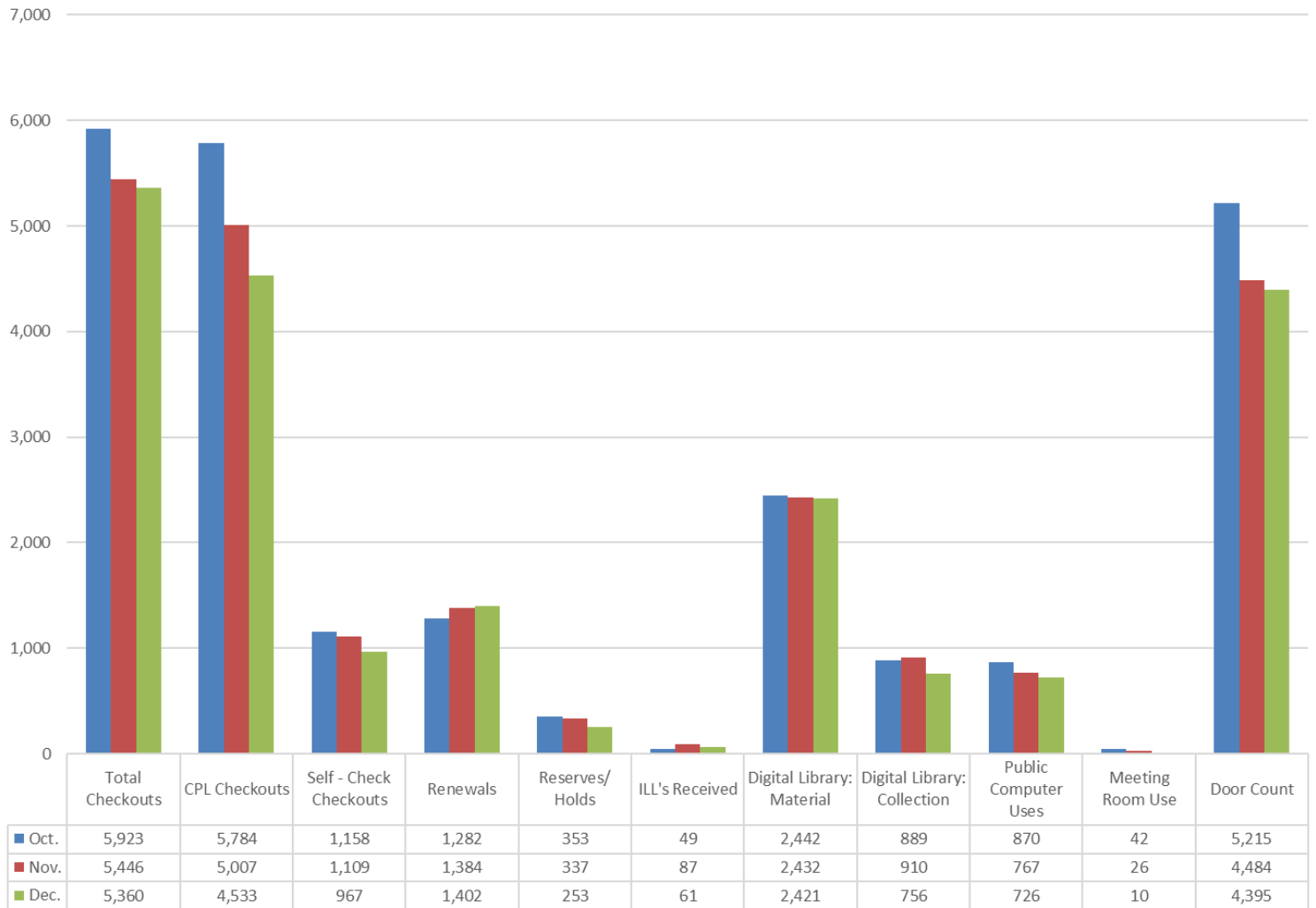
**December
2020**

Karen Connell

Columbus Public Library Director's Report

Access Services, Circulation, & Discovery

Fiscal Year 2020-2021 Library Usage by Month



Programs, Partnerships, Publicity

Services

- Curbside Service (7 Uses in December)
- Door count (avg. 169 people per day, open 26 days)
- Makerspace Open Hours (5 days)

Programs

- While Platte County is in the 'red' status of the COVID-19 risk dial, programs have been cancelled or postponed.
- An autonomous shopping experience, the Friends of the Library book sale, began November 19 and will remain open until the library moves to the temporary location.
- Word Warriors (55 entries this semester)

Online Programs

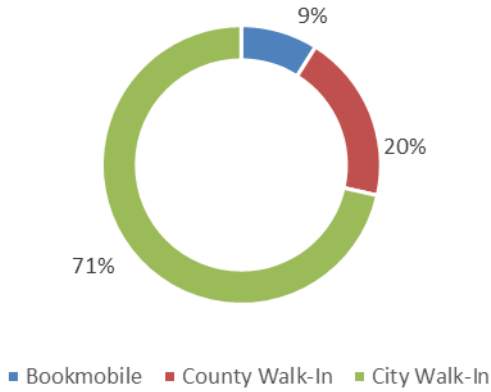
- Teen Book Talks (4 participants)
- 2020 Book Tournament (23 participants)

Platte County Library Service

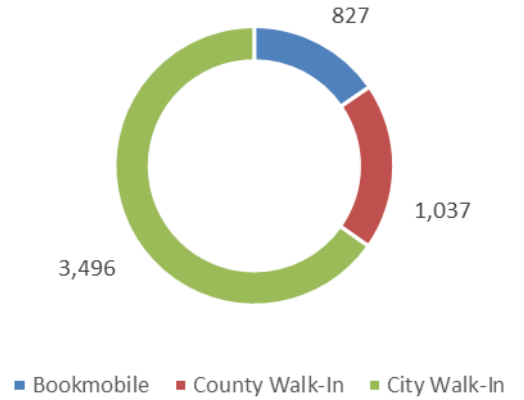
Contract Years July 1, 2020 June 30, 2023

**December
2020**

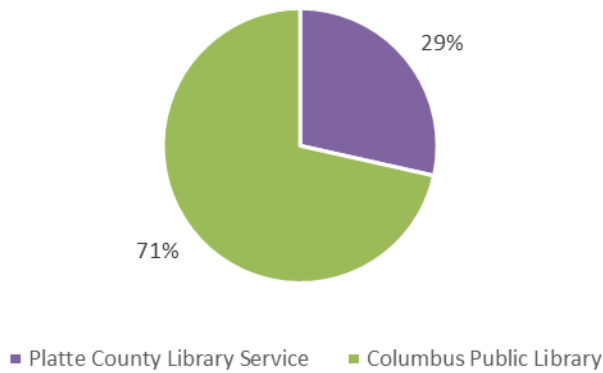
Checkouts Contract Year 1



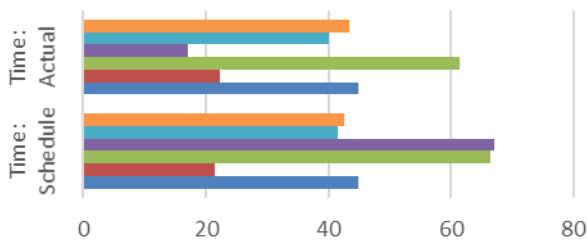
December 2020 Checkouts



Library Services Usage (Checkouts) 1st Year of Contract

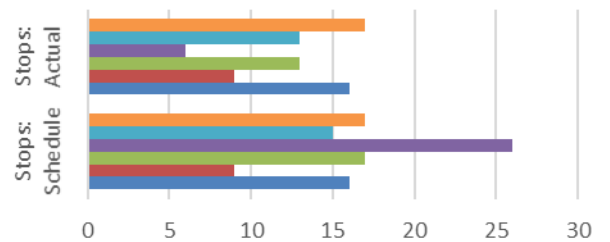


Bookmobile Hours 1st Year of Contract



	Time: Schedule	Time: Actual
December	42.5	43.5
November	41.5	40
October	67	17
September	66.5	61.5
August	21.5	22.25
July	45	45

Bookmobile Stops 1st Year of Contract



	Stops: Schedule	Stops: Actual
December	17	17
November	15	13
October	26	6
September	17	13
August	9	9
July	16	16

September: generator trouble, off road 1 day

October: generator diagnostics and repair, off road 8 days