

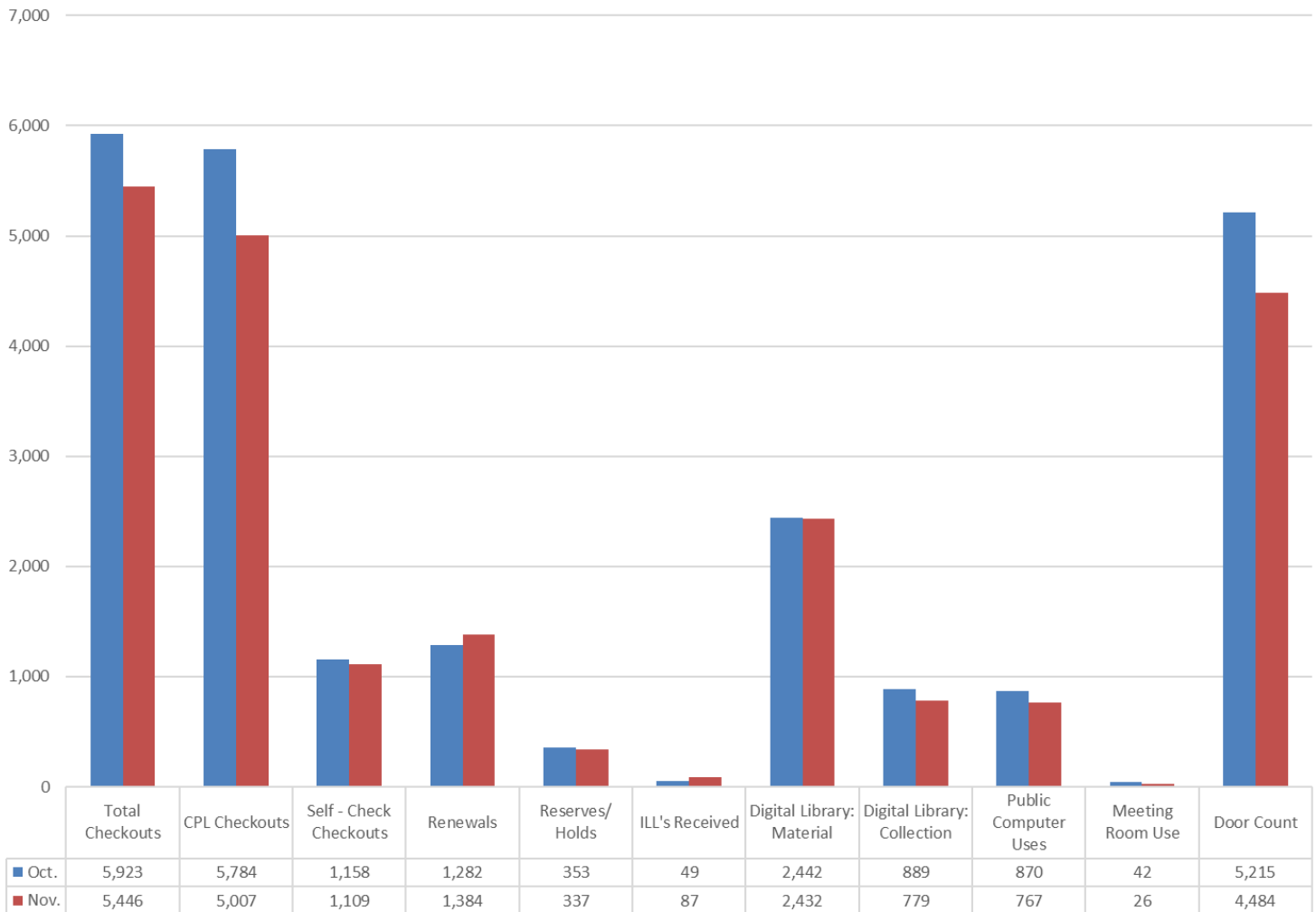
**November
2020**

Karen Connell

Columbus Public Library Director's Report

Access Services, Circulation, & Discovery

Fiscal Year 2020-2021 Library Usage by Month



Programs, Partnerships, Publicity

Services

- Curbside Service (12 Uses in November)
- Door count (avg. 204 people per day, open 22 days)
- Food for Fines (132 cans donated, 44 participants)

Programs

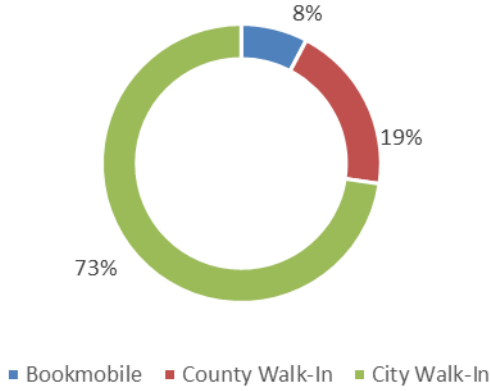
- While Platte County is in the 'red' status of the COVID-19 risk dial, programs have been cancelled or postponed.
- An autonomous shopping experience, the Friends of the Library book sale, began November 19 and will remain open until the library moves to the temporary location.

Platte County Library Service

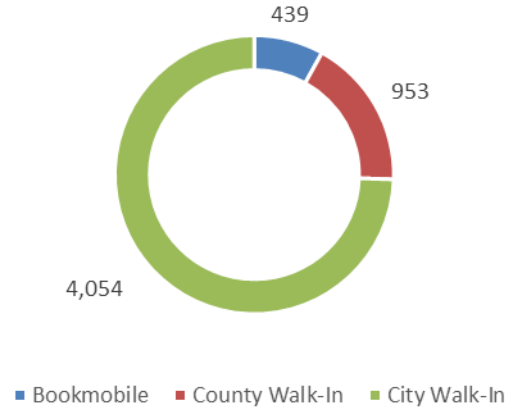
Contract Years July 1, 2020 June 30, 2023

**November
2020**

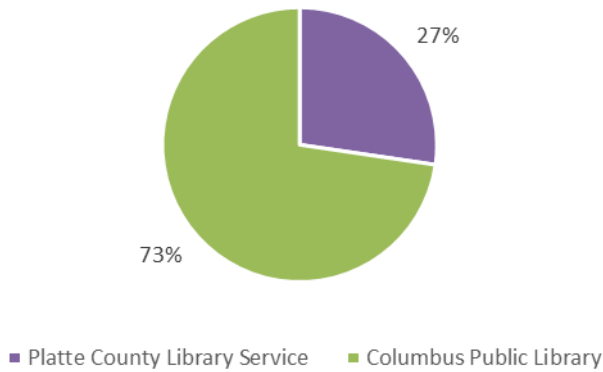
Checkouts Contract Year 1



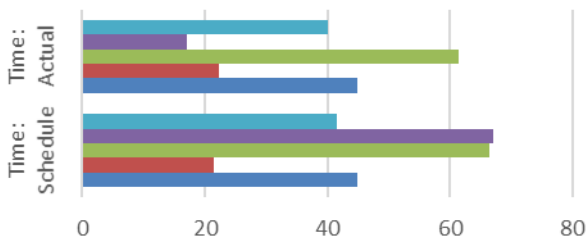
November 2020 Checkouts



Library Services Usage (Checkouts) 1st Year of Contract

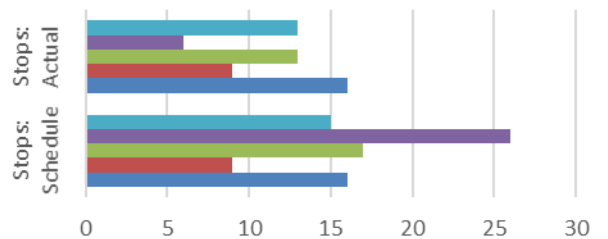


Bookmobile Hours 1st Year of Contract



| | Time: Schedule | Time: Actual |
|-----------|----------------|--------------|
| November | 41.5 | 40 |
| October | 67 | 17 |
| September | 66.5 | 61.5 |
| August | 21.5 | 22.25 |
| July | 45 | 45 |

Bookmobile Stops 1st Year of Contract



| | Stops: Schedule | Stops: Actual |
|-----------|-----------------|---------------|
| November | 15 | 13 |
| October | 26 | 6 |
| September | 17 | 13 |
| August | 9 | 9 |
| July | 16 | 16 |

September: generator trouble, off road 1 day

October: generator diagnostics and repair, off road 8 days