

**May  
2020**

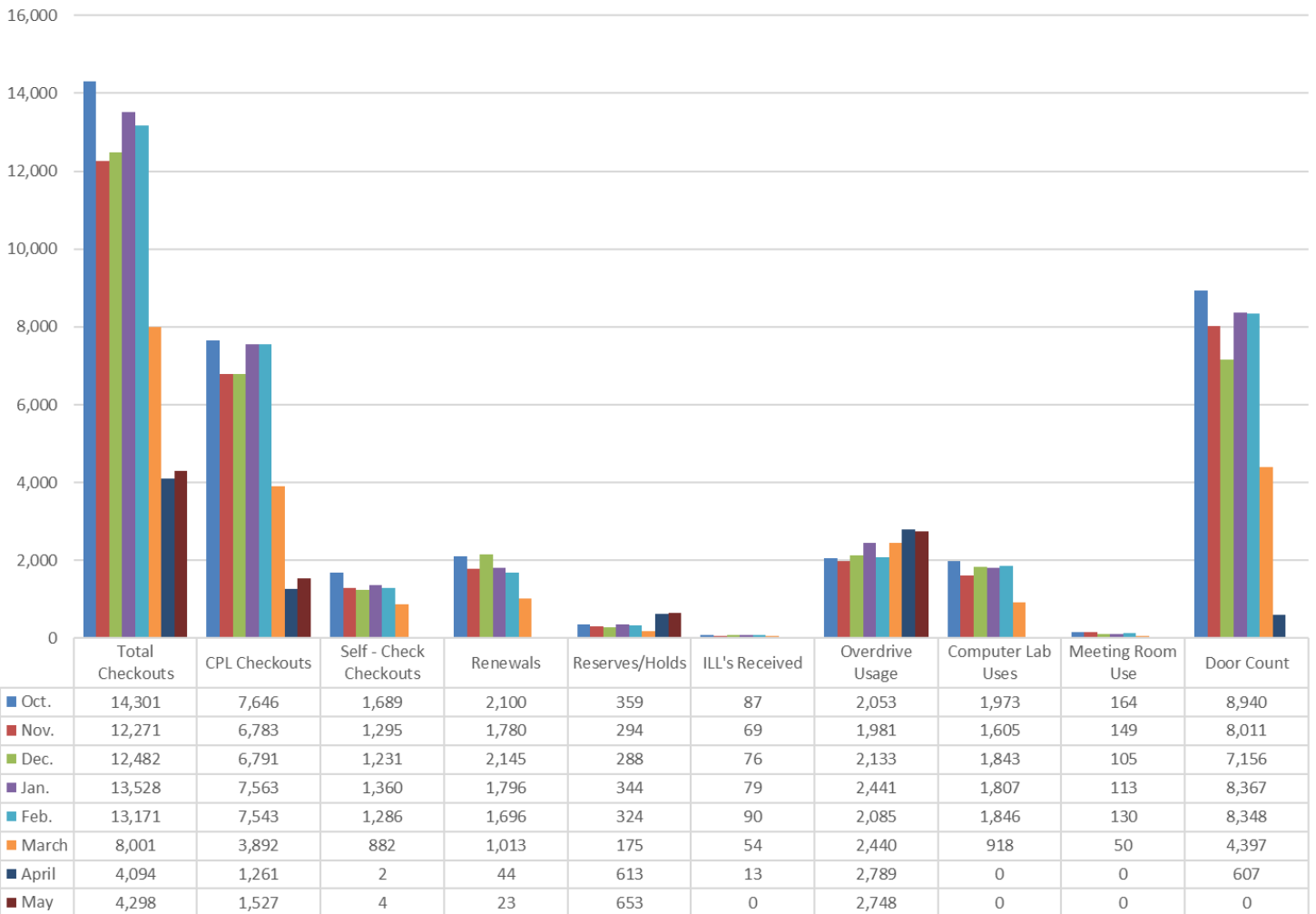
Karen Connell

# Columbus Public Library Director's Report

## Access Services, Circulation, & Discovery

Building closed to the public beginning  
March 16 to limit public exposure during

Fiscal Year 2019-2020 Library Usage by Month



## Programs, Partnerships, Publicity

### Programs

- Activities and resources shared online and by mail
  - StoryTime videos, book clubs, tutorials for using Digital Library resources, etc.
- Summer Reading Program online for reading logs and activities. Packets with supplies (crafts, experiments, baking) distributed for program participants.

### Partnerships

- Assisting with HyVee grocery delivery: taking orders during the week and delivering on Saturdays

### Curbside Service

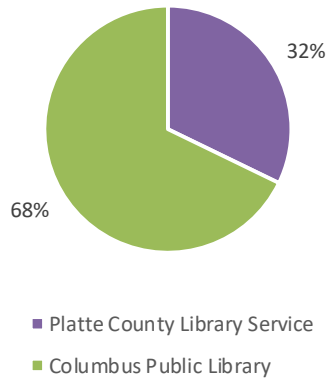
- Implemented on April 9 for materials checkout.
- Cardholders place holds on materials online or by phone.
- Materials are gathered and a pick up time is scheduled.
- Upon arrival, cardholders alert staff and wait for their items to be placed outside the building for retrieval.

# Platte County Library Service

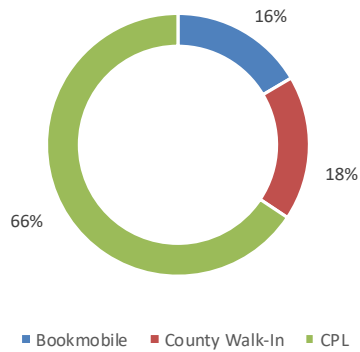
Contract Years July 1, 2017- June 30, 2020

**May  
2020**

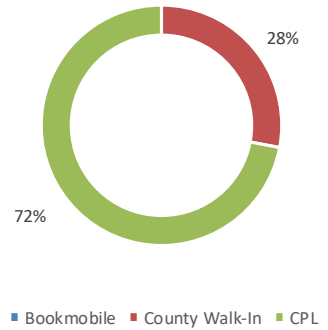
### Library Usage (Checkouts) 2017-2020 Contract



### Checkouts 3rd Year of Contract



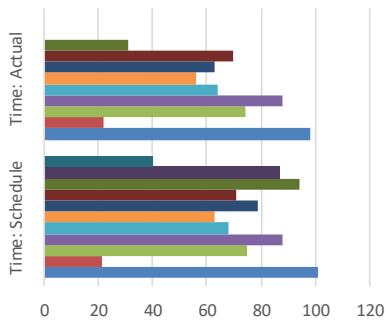
### May 2020 Checkouts



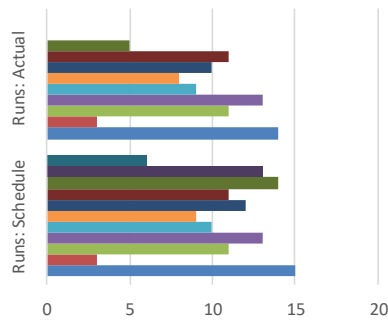
Implemented Curbside Service on April 9 for materials checkout. Cardholders place holds on materials online or by phone. A pick up time is scheduled, during which the items are placed outside the building for retrieval.

Schools closed beginning March 16 to limit exposure and community spread during COVID-19 pandemic outbreak.

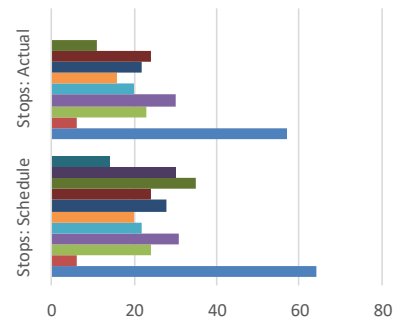
### Bookmobile Hours 3rd Year of Contract



### Bookmobile Runs 3rd Year of Contract



### Bookmobile Stops 3rd Year of Contract



|           | Time: Schedule | Time: Actual |
|-----------|----------------|--------------|
| May       | 40             | 0            |
| April     | 87             | 0            |
| March     | 94             | 31           |
| February  | 71             | 70           |
| January   | 79             | 63           |
| December  | 63             | 56           |
| November  | 68             | 64           |
| October   | 88             | 88           |
| September | 75             | 74           |
| August    | 21             | 22           |
| July      | 101            | 98           |

|           | Runs: Schedule | Runs: Actual |
|-----------|----------------|--------------|
| May       | 6              | 0            |
| April     | 13             | 0            |
| March     | 14             | 5            |
| February  | 11             | 11           |
| January   | 12             | 10           |
| December  | 9              | 8            |
| November  | 10             | 9            |
| October   | 13             | 13           |
| September | 11             | 11           |
| August    | 3              | 3            |
| July      | 15             | 14           |

|           | Stops: Schedule | Stops: Actual |
|-----------|-----------------|---------------|
| May       | 14              | 0             |
| April     | 30              | 0             |
| March     | 35              | 11            |
| February  | 24              | 24            |
| January   | 28              | 22            |
| December  | 20              | 16            |
| November  | 22              | 20            |
| October   | 31              | 30            |
| September | 24              | 23            |
| August    | 6               | 6             |
| July      | 64              | 57            |